

SONIC FLOW



VOXFLO[®]
passion and purpose

00.

OUR GOAL

Sonic Flow is **the translation of sound energy into a pattern for modern commercial flooring**. Thanks to its minimal style, natural colors and the use of a special nylon fiber development technology, its finishing offers **a rustic feeling with particular attention to detail**. Its colors cover a wide chromatic range ranging from warm grays to beige and brown tones.

VOXFLOOR
MILANO CREATIVE STUDIO



Sonic Flow 01

01.

SONIC FLOW

Soft lines flow into the pattern, creating a gentle rhythm.

Sonic Flow perfectly embodies the current design trends that emphasize positive and welcoming vibes, not only in homes and hotels but also in commercial spaces. It features a handcrafted texture and lightweight construction, making it effortless to install in modern spaces.

SONIC FLOW **GENTAL POWER** MINIMAL STYLE



Sonic Flow 06



Sonic Flow 01



Sonic Flow 02





Sonic Flow 05



Sonic Flow 12



Sonic Flow 05

Colors



Sonic Flow 01



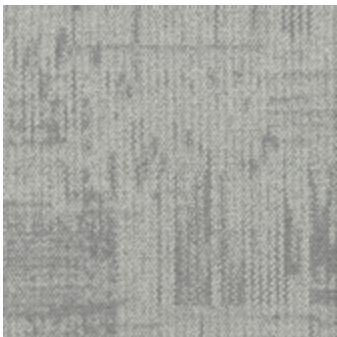
Sonic Flow 02



Sonic Flow 03



Sonic Flow 04



Sonic Flow 05



Sonic Flow 06



Sonic Flow 07



Sonic Flow 08



Sonic Flow 09



Sonic Flow 10



Sonic Flow 11

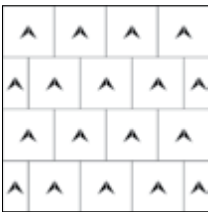


Sonic Flow 12

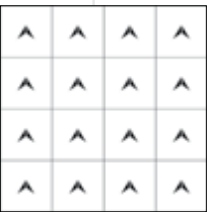
Specifications

Style Name:	Sonic Flow
Construction:	Multi-Level loop
Fiber:	PUREWEAVE™ Nylon
Gauge:	1/12"
Stitches:	10 per inch
Pile Weight:	20 OZ/yd²
Average Pile Height:	4.0 ± 0.5mm
Backing:	EcoAce-Bac®
Tile size:	50cm*50cm
Area of Use:	Commercial – Heavy Duty
Anti-microbial:	Ultra Fresh Treatment (Available)
Flammability:	ASTM E648 Class I, GB8624-2012 B1(C)
Smoke Density:	ASTM E662 ≤ 450
Static Propensity:	AATCC-134≤3.5 KV, GB/T 18044-2008

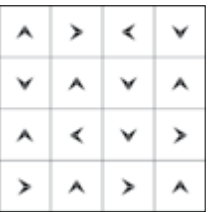
Installation Methods



Brick



Monolithic



Quarter-turn



Sonic Flow 09

Manufacture System

SOLAR made carpet

VOXFLOR® constructs its solar power generation system, utilizing clean energy for sustainable production.



An Environmental Product Declaration (EPD) tells the life cycle story of a product in a single, comprehensive report. The EPD provides information about a product's impact upon the environment, such as global warming potential, smog creation, ozone depletion and water pollution.



Administered by the Singapore Environment Council (SEC) since 1999, It is Singapore's leading environmental standard and certification mark with over 3800 unique products certified across 43 countries.

Credits Contribution to:



LEED (Leadership in Energy and Environmental Design) is the most widely used green building rating system in the world. LEED certification is a globally recognized symbol of sustainability achievement and leadership.



VOXFLOR® tracks and reduces greenhouse gas emissions (ISO 14064), minimizes the carbon footprint of carpet tiles (ISO 14067), and achieves carbon neutrality through renewable energy and offsetting (ISO 14068-1).



ISO9001, ISO14001, ISO45001 certified, VOXFLOR® ensures reliable, high-quality manufacturing.



Eco-Ace-Bac® Collection
GLP No. : 100231

Green Label Plus is an independent testing program that identifies carpet, adhesives, and cushion with very low emissions of VOCs to help improve indoor air quality.



CE marking indicates that a product has been assessed by the manufacturer and deemed to meet EU safety, health and environmental protection requirements.



Ultra-Fresh® is a portfolio of antimicrobial treatments developed by Thomson Research Associates, Inc. Customer can choose this High-Performance Antimicrobial Technology.



WELL is the leading tool for advancing health and well-being in buildings globally. Register your office, building or other space to leverage WELL's flexible framework for improving health and human experience through design.



Declare is a transparency platform to share and find healthy building products. VOXFLOR's EcoAce-Bac® Collection reach "Red List Free" grade.

PUREWEAVE™

VOXFLOR® offers PureWeave Nylon, a solution-dyed nylon fiber with built-in enhanced stain resistance ability against acid-based stains, which account for over 90% of the stains in daily life, such as tea, coffee, juice, etc. This feature gives carpet tiles long-lasting and effective anti-stain properties with lower maintenance costs, and longer product lifespan.



Cradle to Cradle® Certified is the global standard for products that are safe, circular and responsibly made. It is to ensure the impact of their products on people and planet is a positive one.

LEAVE SONIC FLOW ECHOS IN YOUR SOUL



VOXFLOR®

www.voxflor.com

Shanghai **Headquarters**

T +86 21 62989325

Milano Creative Studio

T +39 3885863150

China **Branch Offices**

Beijing/ Guangzhou/ Shenzhen/ Xiamen

