

# NOVEL TARTAN

Getting **away from mass production** and popular outline, Novel Tartan with both neutral colors and delicate accents, supports **individual originality**.

**VOXFLOR®**  
*passion and purpose*



# 01.

## OUR GOAL

There is no **progress** without **memory**. Novel Tartan takes inspiration from **classic and elegant textile** patterns revisited into carpet tiles solutions with a style that winks at the current **retro trend**.

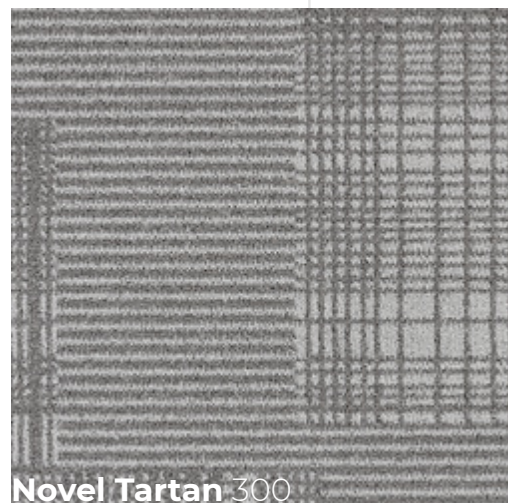
As a fashion-driven flooring solution with **rich textures** and **delicate linear accents**, Novel Tartan looks into the future with an eye to the comeback of **modern classics**.

**VOXFLOOR**  
MILANO CREATIVE STUDIO

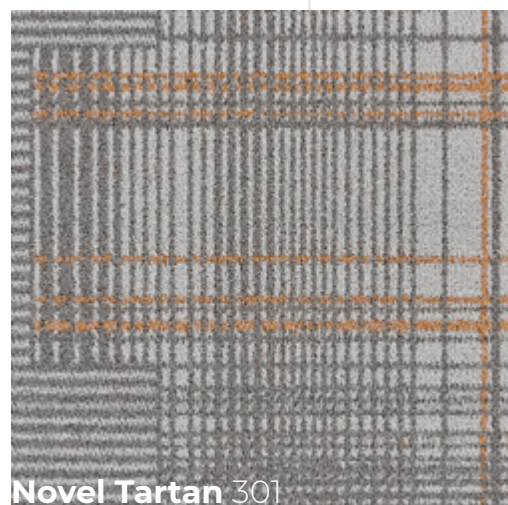


Novel Tartan 601





Novel Tartan 300



Novel Tartan 301

Thanks to a complete series of **neutral tones** ranging from dark to light gray to warm beige, the collection guarantees **total coverage of classic** and elegant solutions. Furthermore, for each basic color, a product is offered with **lively accents** for all those solutions that require a touch of **freshness and stylish design**.



Novel Tartan 300, 301



# 02.

## OUR PRODUCT

Novel Tartan Collection is a creative expression of **classic elegance**, modernized for the modern consumer.

The inspiration for this design comes from the strong fashion comeback of the classic British pattern in **fashion design**, but also considering that vintage culture is **absolutely on trend** in interior design as well.

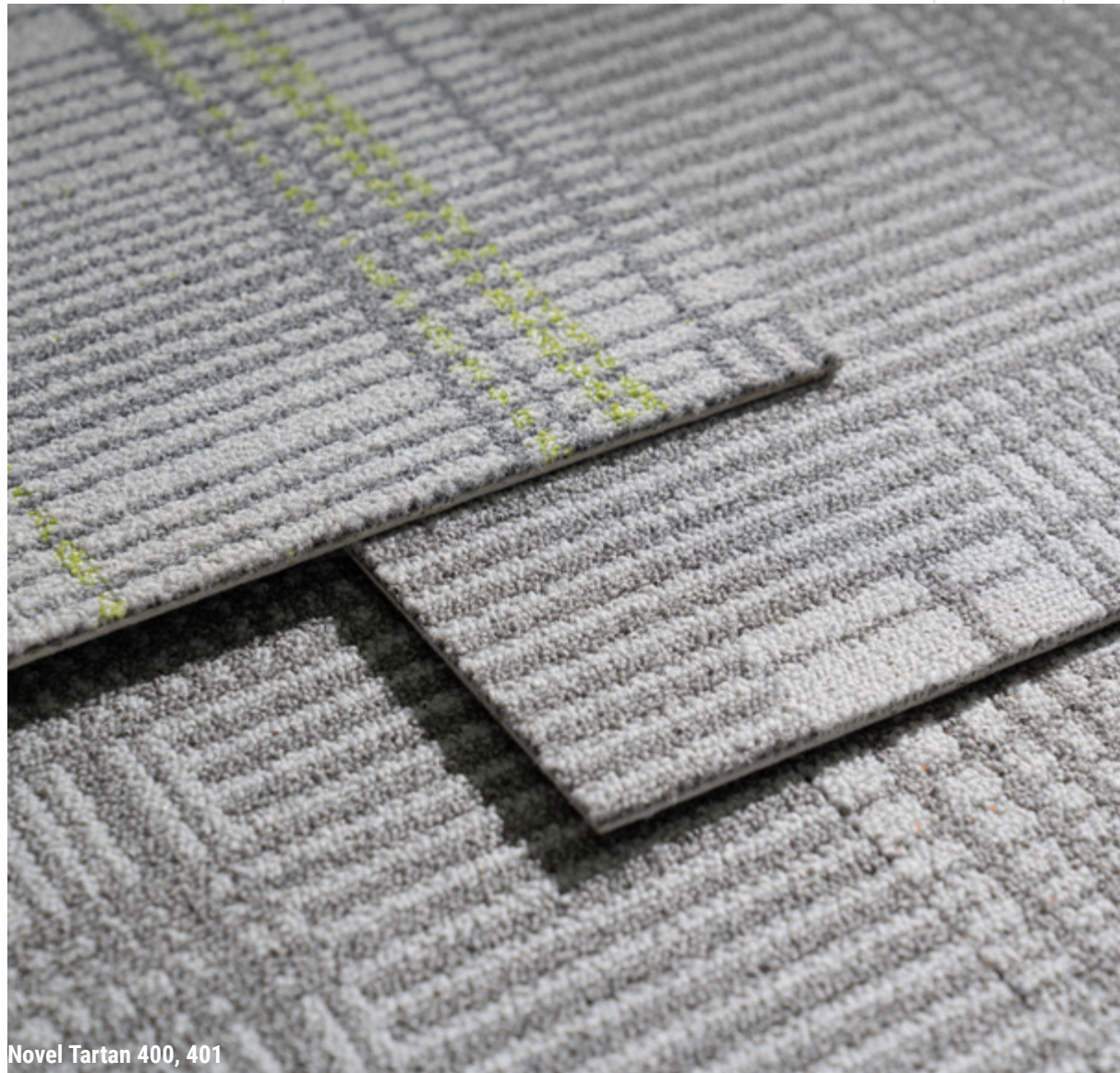
VOXFLO is combining the two elements in a carpet tiles flooring solution that mixes the need for innovative solutions and the love for classic elegance.

# NOVEL TARTAN

## A NEW VINTAGE CULTURE







Novel Tartan 400, 401

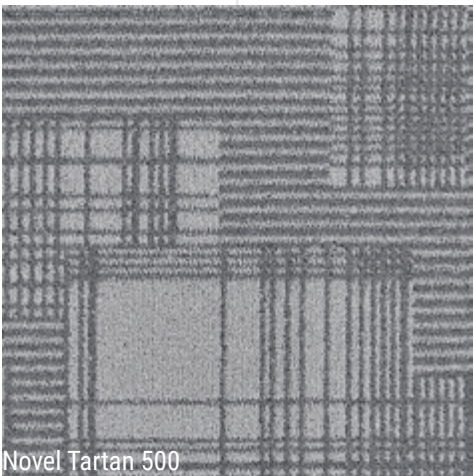


Novel Tartan 401, 701

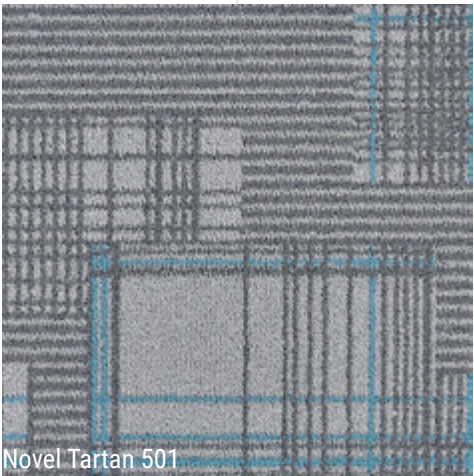




Novel Tartan 500, 501



Novel Tartan 500



Novel Tartan 501





Novel Tartan 500



Novel Tartan 700











Novel Tartan 301



Novel Tartan 300, 301



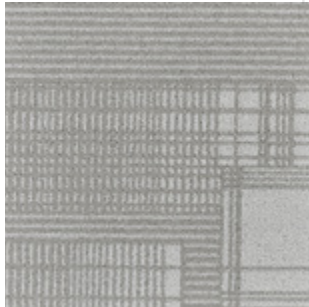
Novel Tartan 200, 201



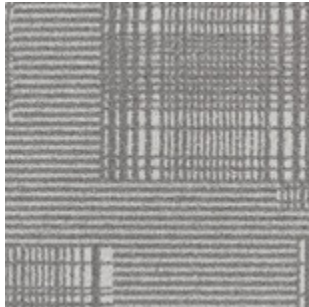


Novel Tartan 800, 801

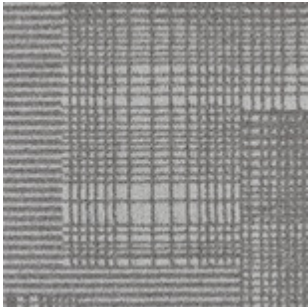




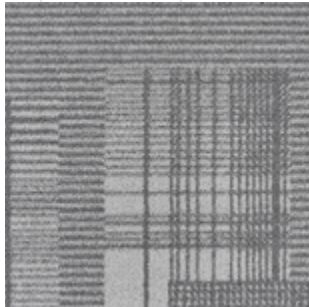
Novel Tartan 100



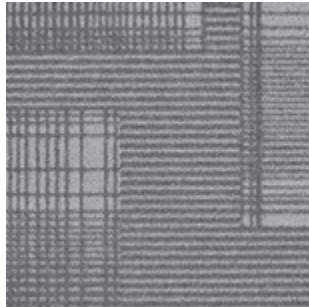
Novel Tartan 200



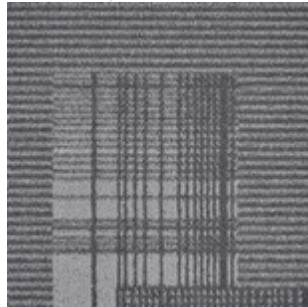
Novel Tartan 300



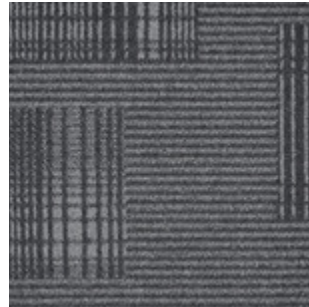
Novel Tartan 400



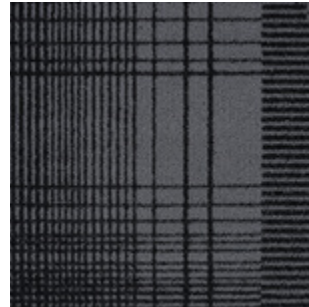
Novel Tartan 500



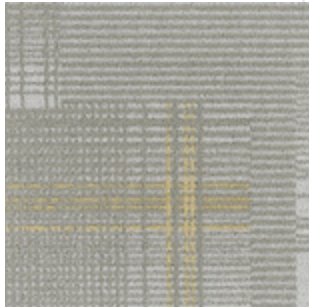
Novel Tartan 600



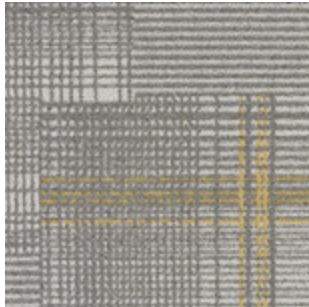
Novel Tartan 700



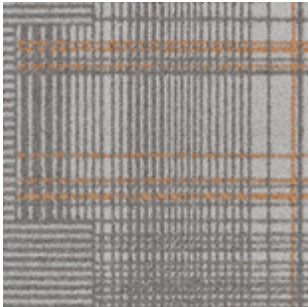
Novel Tartan 800



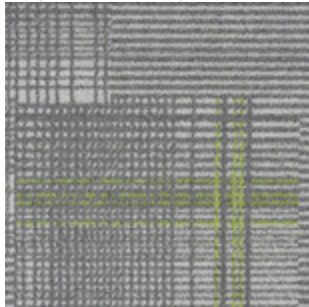
Novel Tartan 101



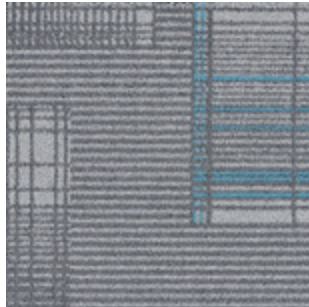
Novel Tartan 201



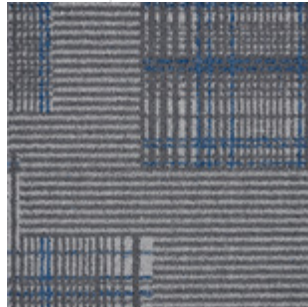
Novel Tartan 301



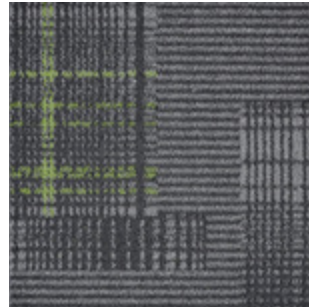
Novel Tartan 401



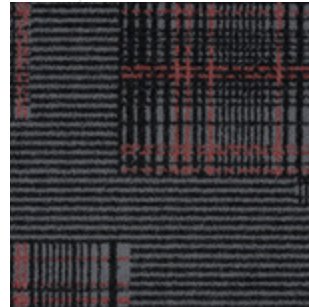
Novel Tartan 501



Novel Tartan 601



Novel Tartan 701



Novel Tartan 801

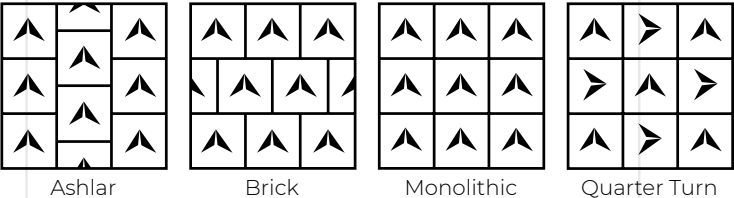


Novel Tartan 100, 101

Specifications

Style Name:	Novel Tartan
Construction:	Multi-level Loop
Fiber:	PUREWEAVE™ Nylon
Gauge:	1/10"
Stitches:	8 per inch
Pile Weight:	20 OZ/yd²
Average Pile Height:	4.0 ± 0.5mm
Backing:	EcoAce-Bac®
Tile size:	50cm*50cm
Total Thickness:	7.5 ± 0.5mm
Area of Use:	Commercial – Heavy Duty
Anti-microbial:	Ultra-Fresh Treatment (Available)
Flammability:	ASTM E 648 Class I, GB8624-2012 B1(C)
Smoke Density:	ASTEM E 662 Less than 450, GB/T 8627-1999
Static Propensity:	AATCC-134≤3.5 KV, GB/T 18044-2008

Installation Methods





## Manufacture System

### SOLAR made carpet

VOXFLOR® constructs its solar power generation system, utilizing clean energy for sustainable production.



An Environmental Product Declaration (EPD) tells the life cycle story of a product in a single, comprehensive report. The EPD provides information about a product's impact upon the environment, such as global warming potential, smog creation, ozone depletion and water pollution.



Administered by the Singapore Environment Council (SEC) since 1999, It is Singapore's leading environmental standard and certification mark with over 3800 unique products certified across 43 countries.

## Credits Contribution to:



LEED (Leadership in Energy and Environmental Design) is the most widely used green building rating system in the world. LEED certification is a globally recognized symbol of sustainability achievement and leadership.



VOXFLOR® tracks and reduces greenhouse gas emissions (ISO 14064), minimizes the carbon footprint of carpet tiles (ISO 14067), and achieves carbon neutrality through renewable energy and offsetting (ISO 14068-1).



ISO 9001, ISO 14001, ISO 45001 certified, VOXFLOR® ensures reliable, high-quality manufacturing.



Eco-Ace-Bac® Collection  
GLP No. : 100231

Green Label Plus is an independent testing program that identifies carpet, adhesives, and cushion with very low emissions of VOCs to help improve indoor air quality.



CE marking indicates that a product has been assessed by the manufacturer and deemed to meet EU safety, health and environmental protection requirements.



Ultra-Fresh® is a portfolio of antimicrobial treatments developed by Thomson Research Associates, Inc. Customer can choose this High-Performance Antimicrobial Technology.



WELL is the leading tool for advancing health and well-being in buildings globally. Register your office, building or other space to leverage WELL's flexible framework for improving health and human experience through design.



Declare is a transparency platform to share and find healthy building products. VOXFLOR's EcoAce-Bac® Collection reach "Red List Free" grade.

## PUREWEAVE™

VOXFLOR® offers PureWeave Nylon, a solution-dyed nylon fiber with built-in enhanced stain resistance ability against acid-based stains, which account for over 90% of the stains in daily life, such as tea, coffee, juice, etc. This feature gives carpet tiles long-lasting and effective anti-stain properties with lower maintenance costs, and longer product lifespan.



Cradle to Cradle® Certified is the global standard for products that are safe, circular and responsibly made. It is to ensure the impact of their products on people and planet is a positive one.

# TIMELESS ELEGANCE



Novel Tartan 100, 200, 300





**VOXFLOR®**

[www.voxflor.com](http://www.voxflor.com)

Shanghai **Headquarters**

T +86 021 62989325

Milano **Creative Studio**

T +39 3885863150

China **Branch Offices**

Beijing/ Guangzhou/ Shenzhen/ Xiamen

