

# MOTION FRAGMENTS

## COLLECTION



**VOXFLO<sup>R</sup>**  
*passion and purpose*



# 00.

## OUR GOAL

Inspired by the silent choreography of light and shadow as they move across interior spaces, **Motion Fragments captures the fleeting beauty of transformation throughout the day.** As sunlight shifts and angles change, patterns emerge, blur, and dissolve; a dynamic dialogue between nature and architecture brought to life through texture and form.

Motion Fragments brings a quiet vitality to the flooring surface, blending the organic with the geometric, the fleeting with the permanent. It invites spaces to become vivid canvases, **living environments that breathe, shift, and evolve with the rhythms of the day.**

**VOXFLOOR**  
MILANO CREATIVE STUDIO



Silent Halo 100, Ashlar



Shifting Trails 100, Ashlar

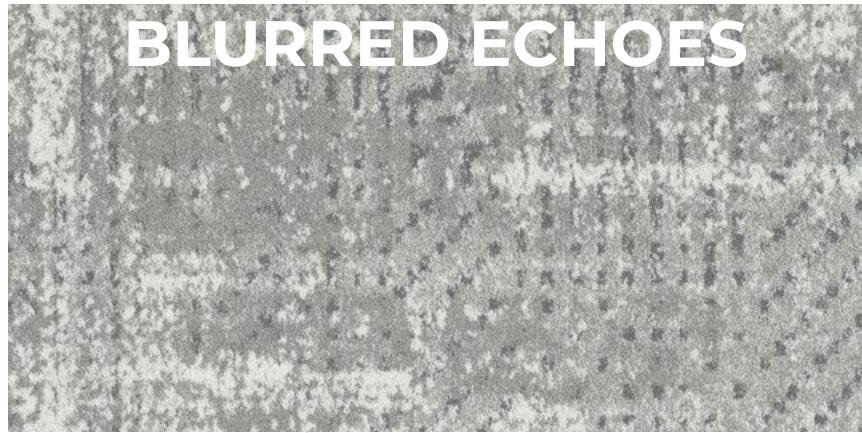


Shadow Weave 100, Ashlar

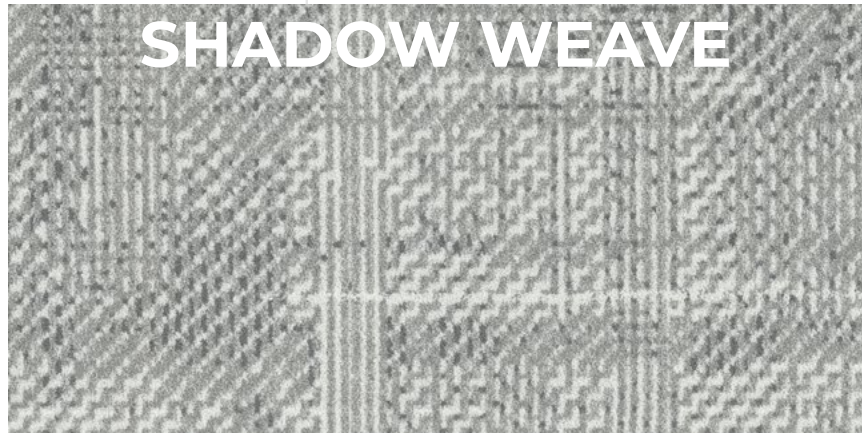


Blurred Echoes 100, Ashlar





**BLURRED ECHOES**



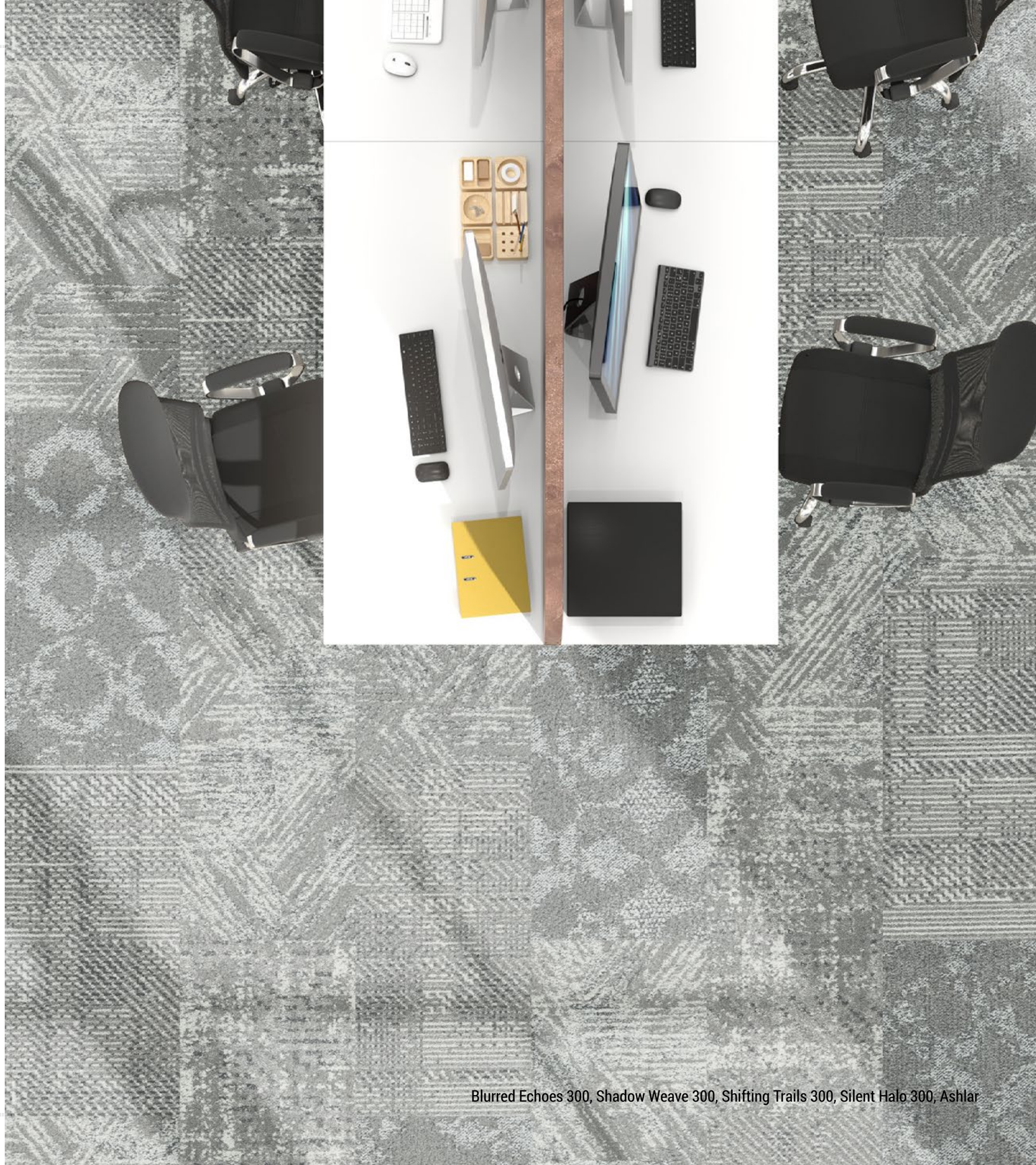
**SHADOW WEAVE**



**SHIFTING TRAILS**



**SILENT HALO**



Blurred Echoes 300, Shadow Weave 300, Shifting Trails 300, Silent Halo 300, Ashlar



# 01.

## BLURRED ECHOES

An organic fusion of natural elements and softened silhouettes, evoking the quiet presence of the outdoors.

Blurred Echoes is rooted in nature, in the shadow play of dense foliage, the layering of trees, and the soft merging of organic elements like branches, leaves, and undergrowth, gently weaving on the interior walls on a sunny day. These natural overlaps create organic and calming patterns, which are interpreted here as a gently faded, almost watercolor-like texture. The result is a neutral, enveloping surface that offers both visual softness and atmospheric depth.

# SUBTLE NEUTRALITY QUIET AND PEACEFUL



Blurred Echoes 100, 184, Ashlar

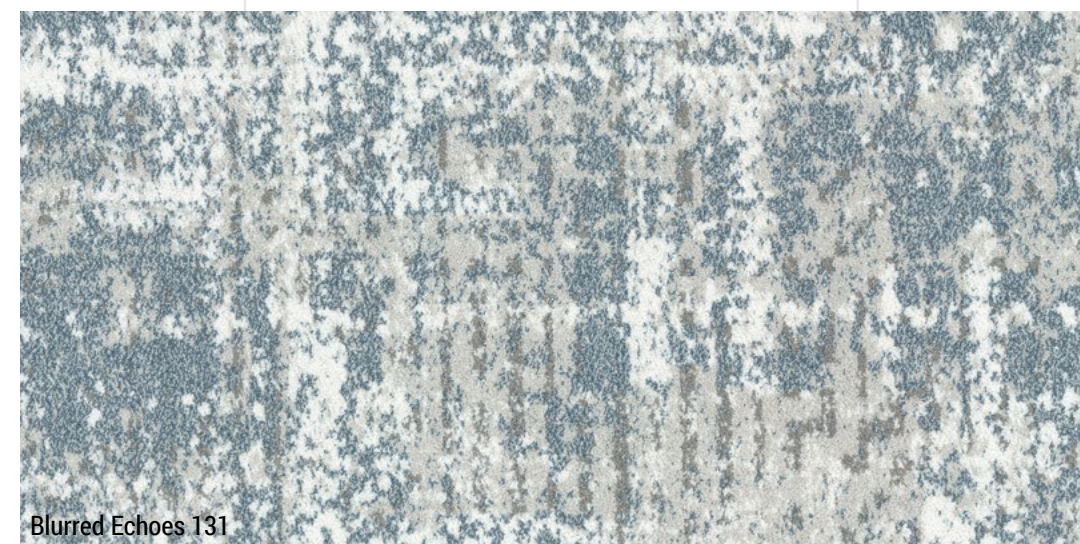




Blurred Echoes 130, 131, Ashlar



Blurred Echoes 130



Blurred Echoes 131





Blurred Echoes 300, 130, Ashlar



# SUBTLE FORMALITY GEOMETRIC GRID

## 02.

**SHADOW WEAVE**

A structured and immersive pattern drawn from the ordered complexity of the urban landscape.

Shadow Weave creates a sense of clarity and control, ideal for environments where focus, rhythm, and regular visual alignment matter. It finds its natural place in private offices, formal meeting rooms, corporate lounges, and learning environments. It's particularly recommended for spaces where subtle formality is required without compromising design depth.





Shadow Weave 143, Ashlar



Shadow Weave 143





Shadow Weave 100, 084, Ashlar



# 03.

## SHIFTING TRAILS

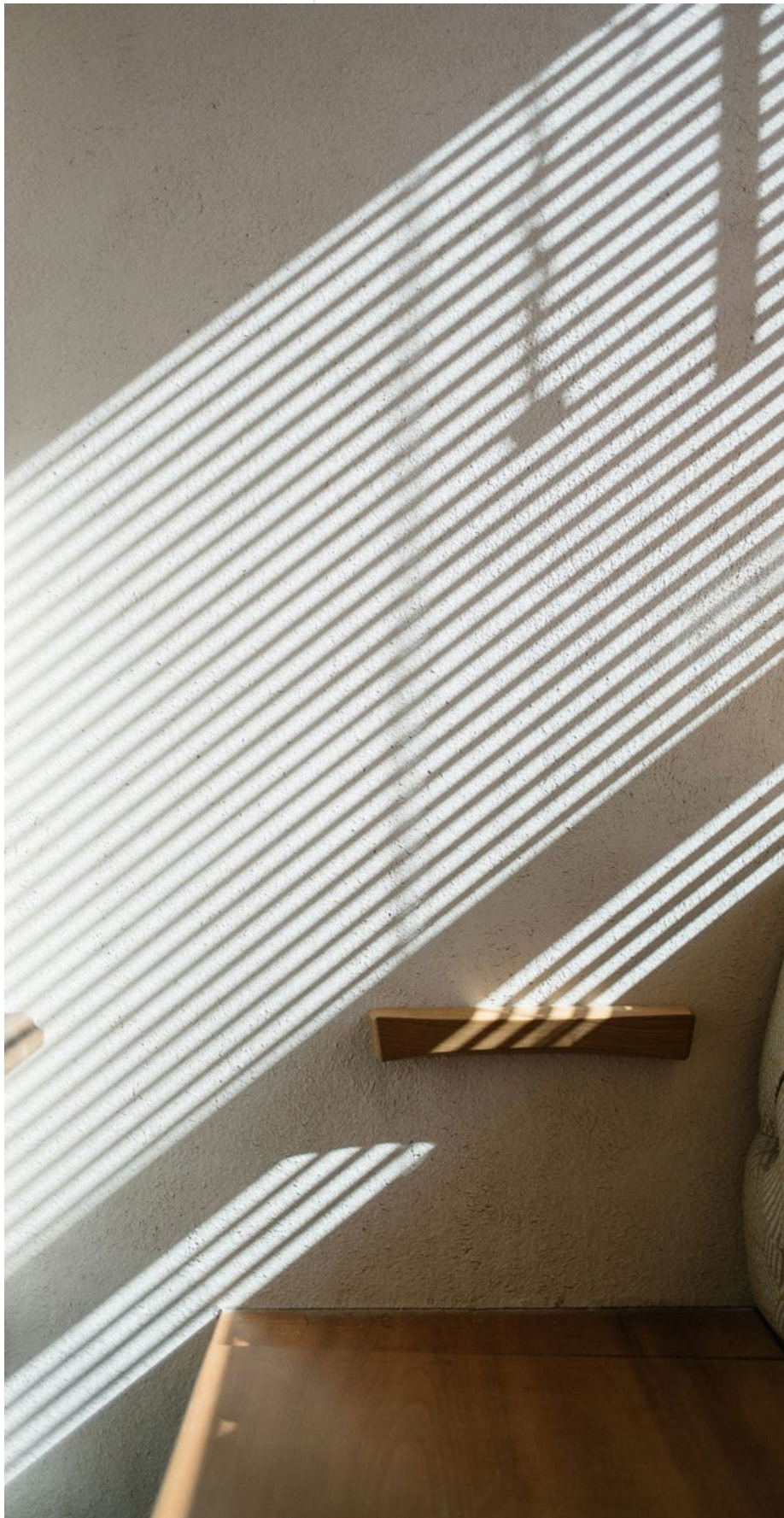
A bold, layered surface inspired by the nested, complex, crisscrossed shadows of architectural frameworks and structural icons.

Shifting Trails delivers a sense of movement, creativity, and crafted strength. It is ideally suited to areas designed to impress: creative lounges, innovation hubs, boutique hospitality spaces, brand experience centers, or iconic reception areas. Wherever a statement is needed, this design brings energy and tactility to the floor in a sophisticated and purposeful way.



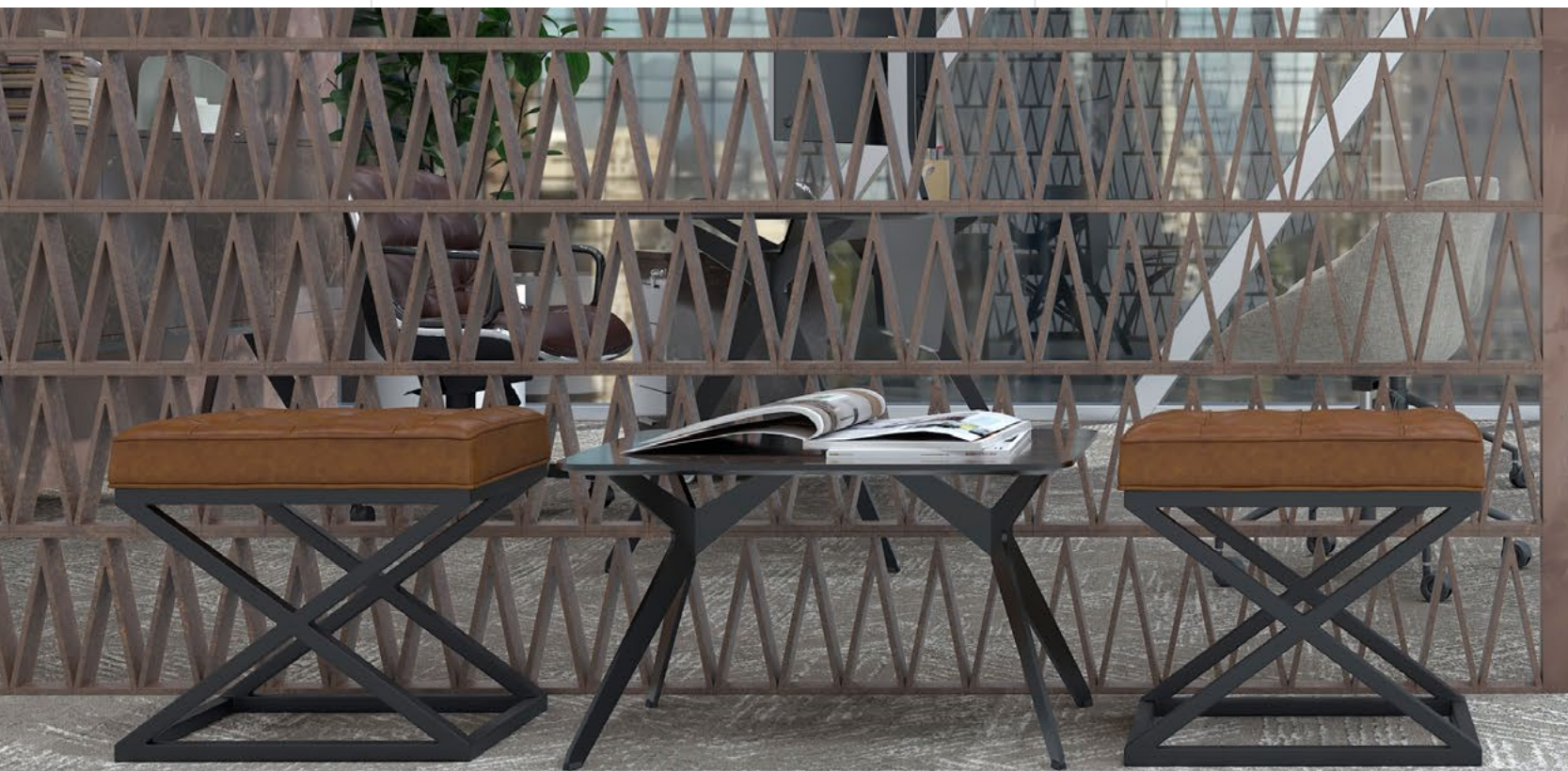
Shifting Trails 400, 131, Ashlar





Shifting Trails 085, Ashlar





Shifting Trails 200, 400, 143, Ashlar





Shifting Trails 143, Ashlar



Shifting Trails 400, 143



Shifting Trails 143



# VISUAL RHYTHM

# CALM SOPHISTICATION

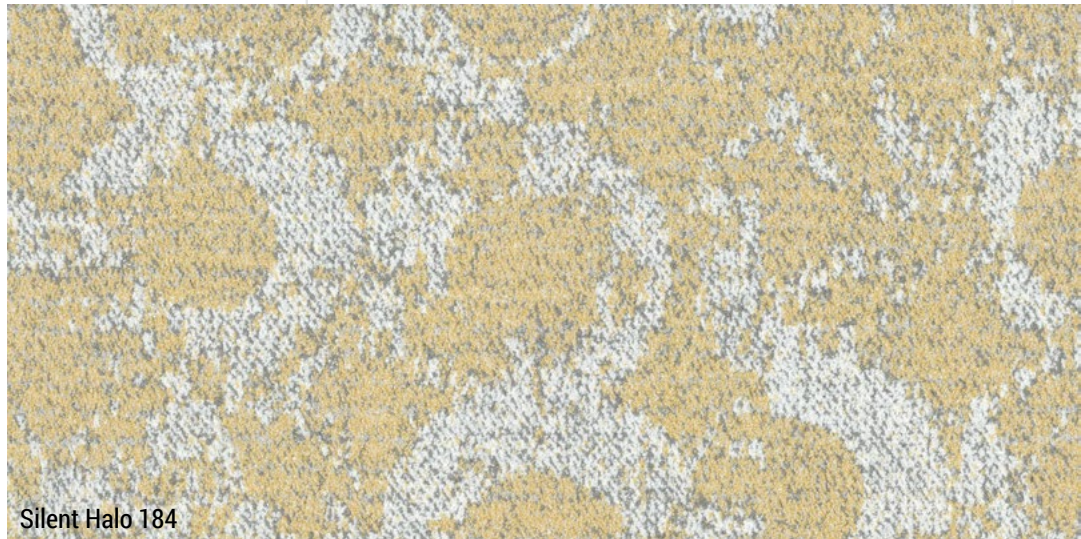
## 04.

SILENT HALO

A calm and contemplative design shaped by the soft rhythm of architectural curves and diffused shadows.

Silent Halo evokes a sense of calm sophistication, making it an ideal choice for spaces that aim to inspire reflection and elegance. Its creative identity lends itself particularly well to representative areas, boutique hotel rooms, gallery-like corridors, or refined executive suites. Silent Halo provides the perfect background for all those spaces where design is expected to speak softly but with distinction.





Silent Halo 184



Silent Halo 200



Silent Halo 200, 184, Ashlar





Silent Halo 184, Ashlar



Silent Halo 143, Ashlar

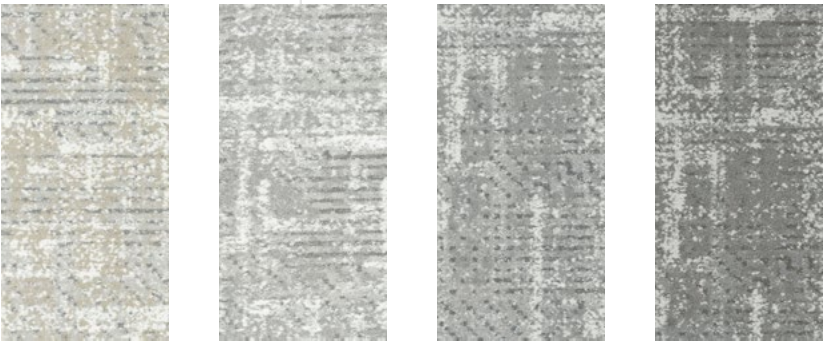




Silent Halo 300, Ashlar



Blurred Echoes Colors



Blurred Echoes 100    Blurred Echoes 200    Blurred Echoes 300    Blurred Echoes 400

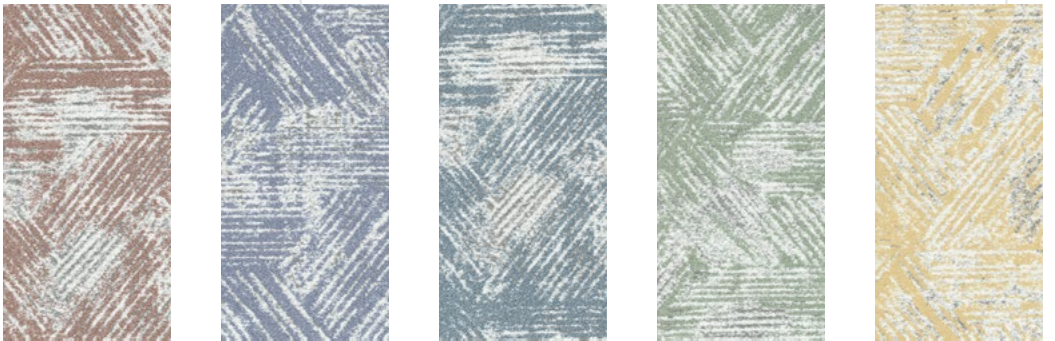


Blurred Echoes 085    Blurred Echoes 130    Blurred Echoes 131    Blurred Echoes 143    Blurred Echoes 184

Shifting Trails Colors

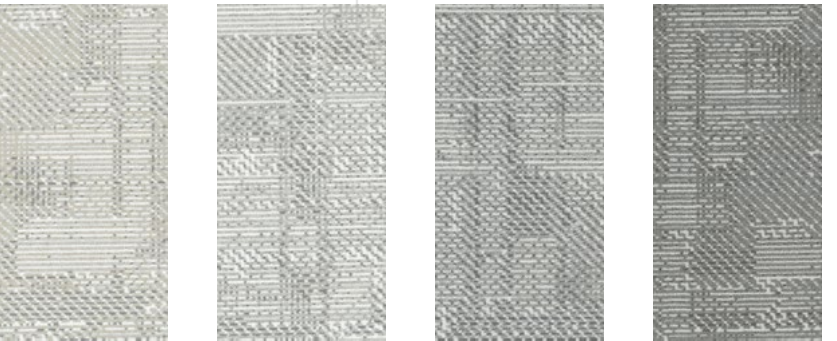


Shifting Trails 100    Shifting Trails 200    Shifting Trails 300    Shifting Trails 400



Shifting Trails 085    Shifting Trails 130    Shifting Trails 131    Shifting Trails 143    Shifting Trails 184

Shadow Weave Colors



Shadow Weave 100    Shadow Weave 200    Shadow Weave 300    Shadow Weave 400

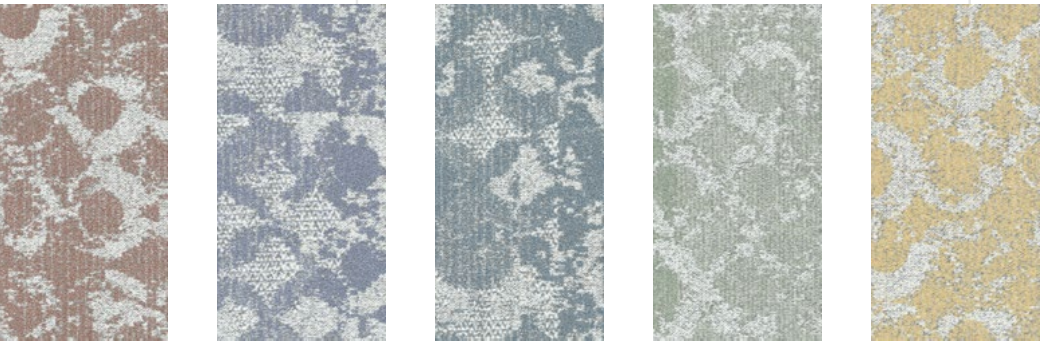


Shadow Weave 085    Shadow Weave 130    Shadow Weave 131    Shadow Weave 143    Shadow Weave 184

Silent Halo Colors



Silent Halo 100    Silent Halo 200    Silent Halo 300    Silent Halo 400



Silent Halo 085    Silent Halo 130    Silent Halo 131    Silent Halo 143    Silent Halo 184





Blurred Echoes 100, Ashlar

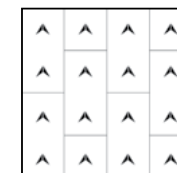


Shadow Weave 085, 131, Ashlar

### Specifications

Collection Name:	Motion Fragments
Product Names:	Blurred Echoes, Shadow Weave, Shifting Trails, Silent Halo
Construction:	Multi-Level Loop
Fiber:	PUREWEAVE™ Nylon & ECONYL® Regenerated Nylon by Aquafil
Gauge:	1/10"
Stitches:	11 per inch
Pile Weight:	26 OZ/yd <sup>2</sup>
Average Pile Height:	4.0 ± 0.5mm
Backing:	EcoAce-Bac® Pro
Tile size:	50cm*100cm
Area of Use:	Commercial – Heavy Duty
Anti-microbial:	Ultra Fresh Treatment (Available)
Flammability:	ASTM E648 Class I, GB8624-2012 B1(C)
Smoke Density:	ASTM E662≤450
Static Propensity:	AATCC-134≤3.5 KV, GB/T 18044-2008≤3.5 KV

### Installation Methods



Ashlar



## Manufacture System

### SOLAR made carpet

VOXFLOOR® constructs its solar power generation system, utilizing clean energy for sustainable production.



An Environmental Product Declaration (EPD) tells the life cycle story of a product in a single, comprehensive report. The EPD provides information about a product's impact upon the environment, such as global warming potential, smog creation, ozone depletion and water pollution.



Administered by the Singapore Environment Council (SEC) since 1999, It is Singapore's leading environmental standard and certification mark with over 3800 unique products certified across 43 countries.

## Credits Contribution to:



LEED (Leadership in Energy and Environmental Design) is the most widely used green building rating system in the world. LEED certification is a globally recognized symbol of sustainability achievement and leadership.



VOXFLOOR® tracks and reduces greenhouse gas emissions (ISO 14064), minimizes the carbon footprint of carpet tiles (ISO 14067), and achieves carbon neutrality through renewable energy and offsetting (ISO 14068-1).



ISO9001, ISO14001, ISO45001 certified, VOXFLOOR® ensures reliable, high-quality manufacturing.



Eco-Ace-Bac® Collection  
GLP No. : 100231

Green Label Plus is an independent testing program that identifies carpet, adhesives, and cushion with very low emissions of VOCs to help improve indoor air quality.



CE marking indicates that a product has been assessed by the manufacturer and deemed to meet EU safety, health and environmental protection requirements.



Ultra-Fresh® is a portfolio of antimicrobial treatments developed by Thomson Research Associates, Inc. Customer can choose this High-Performance Antimicrobial Technology.



WELL is the leading tool for advancing health and well-being in buildings globally. Register your office, building or other space to leverage WELL's flexible framework for improving health and human experience through design.



**Declare.**

Declare is a transparency platform to share and find healthy building products. VOXFLOOR's EcoAce-Bac® Collection reach "Red List Free" grade.

## PUREWEAVE™

VOXFLOOR® offers PureWeave Nylon, a solution-dyed nylon fiber with built-in enhanced stain resistance ability against acid-based stains, which account for over 90% of the stains in daily life, such as tea, coffee, juice, etc. This feature gives carpet tiles long-lasting and effective anti-stain properties with lower maintenance costs, and longer product lifespan.



Cradle to Cradle® Certified is the global standard for products that are safe, circular and responsibly made. It is to ensure the impact of their products on people and planet is a positive one.

# CAPTURING THE DANCE OF LIGHTS AND SHADOWS





**VOXFLOR®**

[www.voxflor.com](http://www.voxflor.com)

Shanghai **Headquarters**

T +86 21 62989325

Milano Creative Studio

T +39 3885863150

China **Branch Offices**

Beijing/ Guangzhou/ Shenzhen/ Xiamen

